



PERFORMANCE REPORT 2020 - 2024

ENVIRONMENT

August 2023



making the difference

Contents

Description & Analysis	3
KPI #1: KEA/HFE at FABEC level (excl. 10 best/worst days)	4
PI #1: HFE based on Actual at FABEC level (incl. all days)	4
PI #2: KEP/HFE based on filed FPL at FABEC level (excl. 10 best/worst days)	5
PI #3: HFE based on filed FPL at FABEC level (incl. all days)	5
PI #4: HFE based on Actual at State level (incl. all days)	6
PI #5: HFE based on filed FPL at State level (incl. all days)	7
Glossary	8

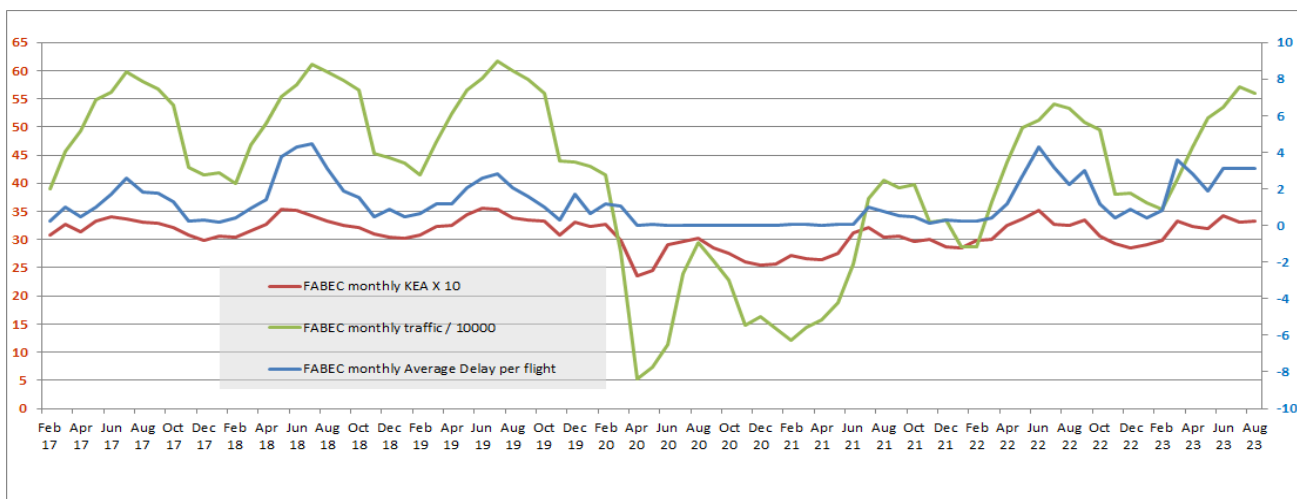
Description & Analysis

ENV KPI #1: KEA/HFE at FABEC level (excl. 10 best/worst days)

In the FABEC area, the yearly rolling average value of efficiency of flown trajectory (expressed in KEA) was 96,83% for the period of September 2022 - August 2023, excluding the 10 best and 10 worst days. This value is 0.42pp less than the reference value (97,25%) and 0.02pp less compared to the 12-month rolling average of August 2022 (96,85%). The rolling KEA indicator has been decreasing slowly but steadily during the last year from January to October 2022. In November 2022, the value increased slightly and remained unchanged until January 2023 (96.83%). Since January 2023, the value has been oscillating between 96,81% and 96,84%. The August 2023 value is 0,01pp less compared to the previous month's value and 0.41pp less than the highest yearly rolling KEA value since 2015 reached in March and April 2021 (97,24%). In August 2023, the difference between KEA and KEP is 2.42pp, which is 0.02pp smaller than the one month prior.

ENV PI#1: HFE based on Actual at FABEC level (including all days)

The flight efficiency (expressed in KEA including all days on a monthly basis) has reached 96,68% in August 2023, which is 0.01pp lower compared to July 2023 (96,69%) and 0.97pp lower compared to April 2020 (97,65%), which is the highest value since January 2016. The KEA in August 2023 has decreased by 0.06pp compared to the same month in 2022 (KEA in August 2022 was 96,74%). The positive correlation between flight efficiency and traffic can be seen in the graph below:



ENV PI#2: KEP/HFE based on Filed FPL at FABEC level (excl. 10 best/worst days)

The KEP 12 month rolling average indicator was 94,41% for August 2023. It has increased by 0.1pp as compared to 94,31% in August 2022. The rolling average has been increasing slowly but steadily during the year of 2022 from 94,29% in May 2022 until it reached 94,36% in February 2023. In March and April the value dropped to 94,34 and from April onwards the value increases every month. In August, the indicator reached its highest level in the year (94,41%).

ENV PI#3: HFE based on Filed FPL at FABEC level (including all days)

The figure shows the same value of the flight efficiency indicator in August 2023 (94,45%) compared to one month prior and an increase in flight efficiency in August 2023 by 0.04pp compared to the value in August 2022 (94,45% in August 2023 vs 94,41% in August 2022).

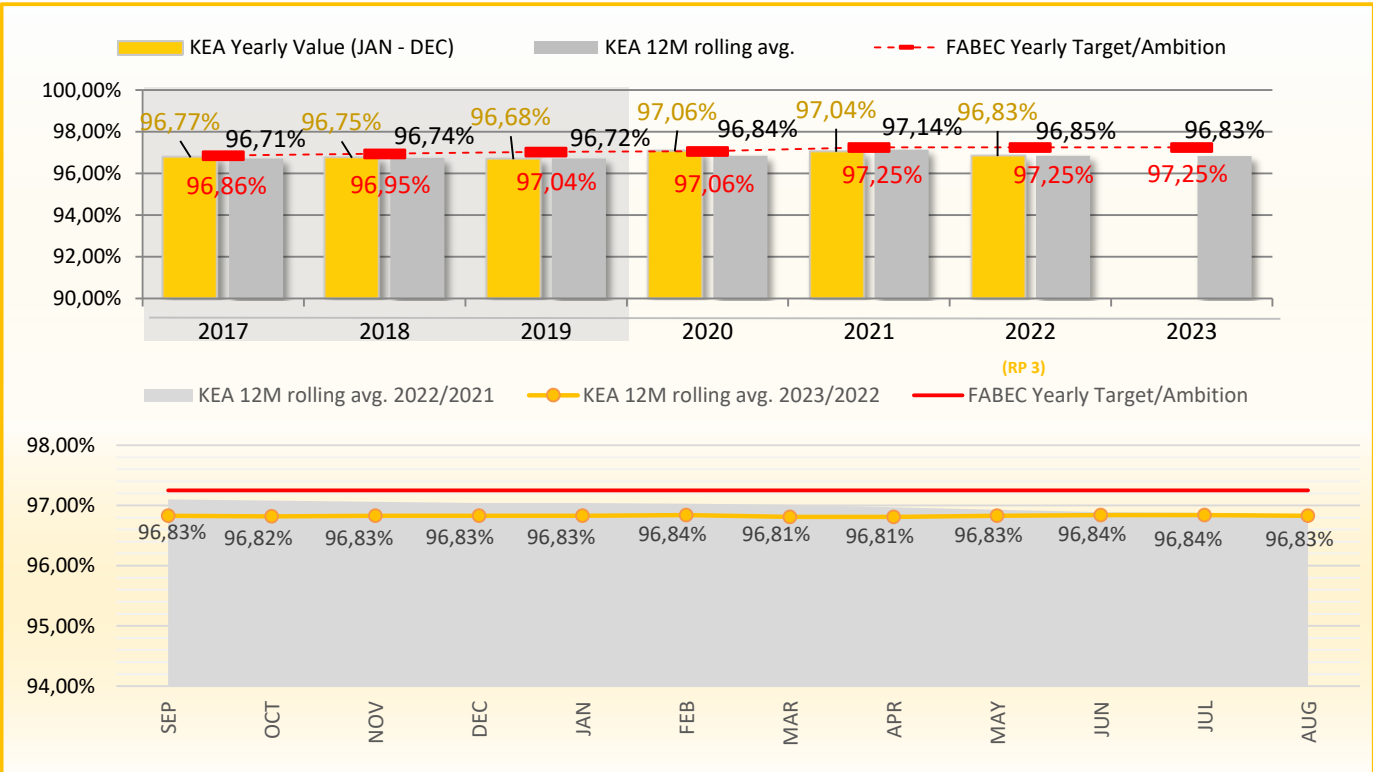
ENV PI#4: HFE based on Actual at State level (including all days)

At national level, all countries except France and Switzerland demonstrated a decrease of flight efficiency based on actual trajectories in August 2023 compared to July 2023.

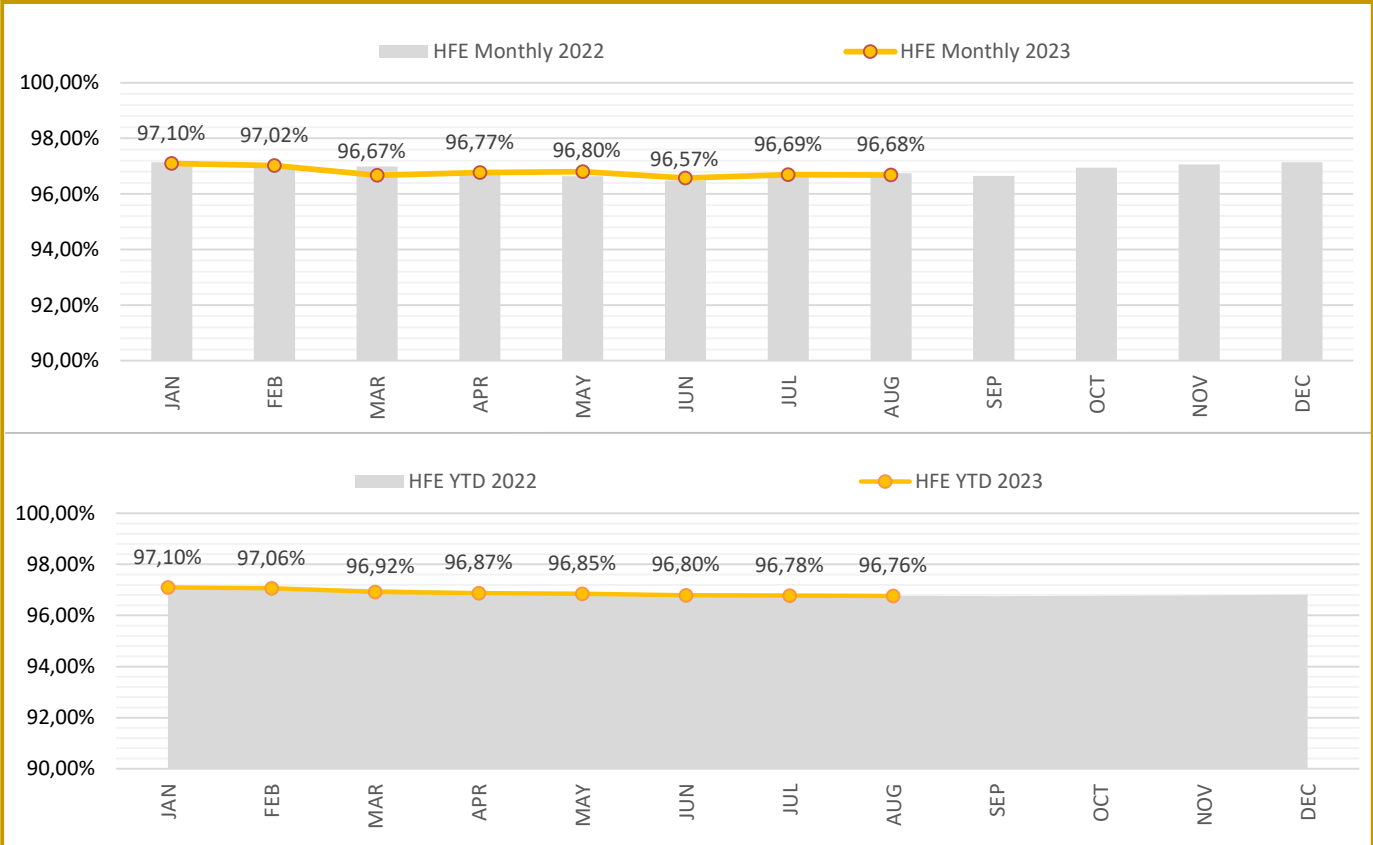
ENV PI#5: HFE based on Filed FPL at State level (including all days)

At national level, all countries except France and Switzerland demonstrated a decrease in flight efficiency based on the filed FPL in August 2023 compared to July 2023.

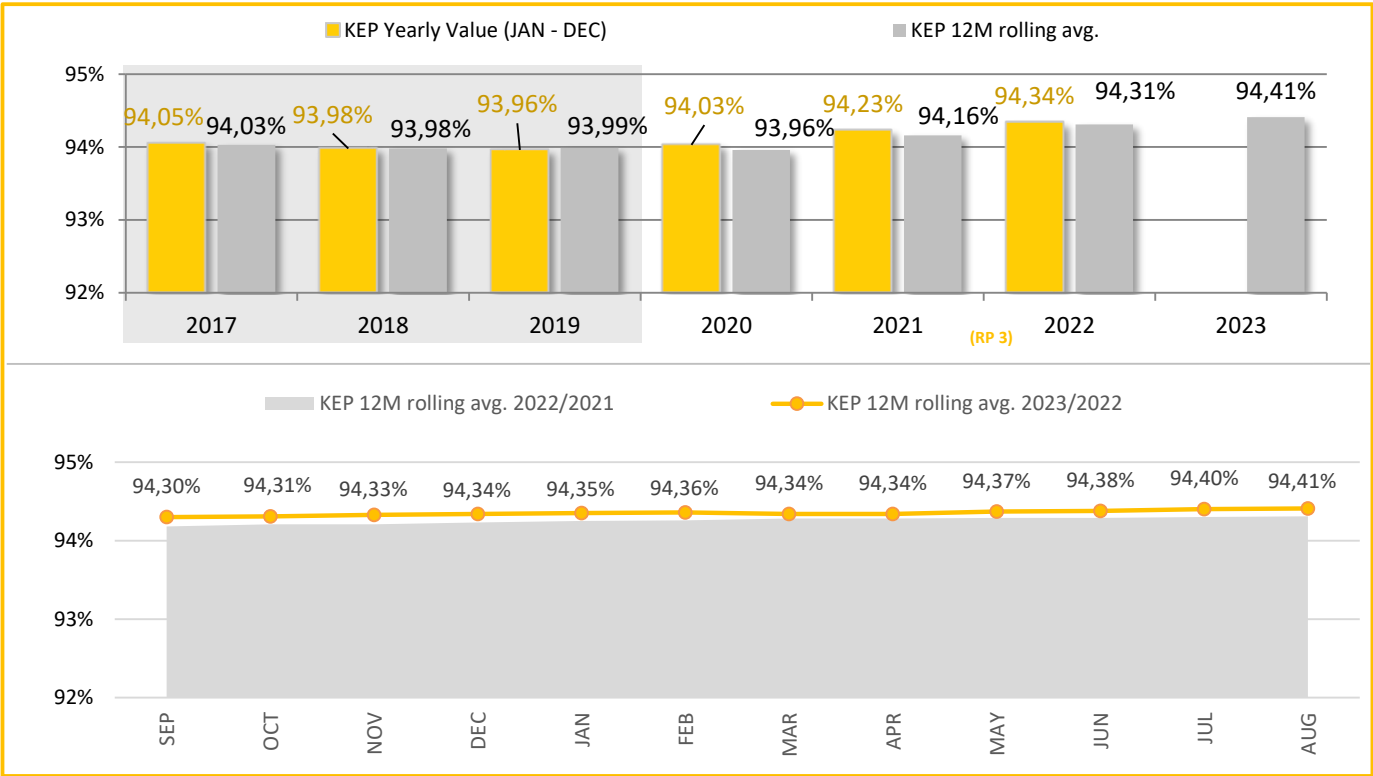
KPI #1: KEA/HFE at FABEC level (excl. 10 best/worst days)



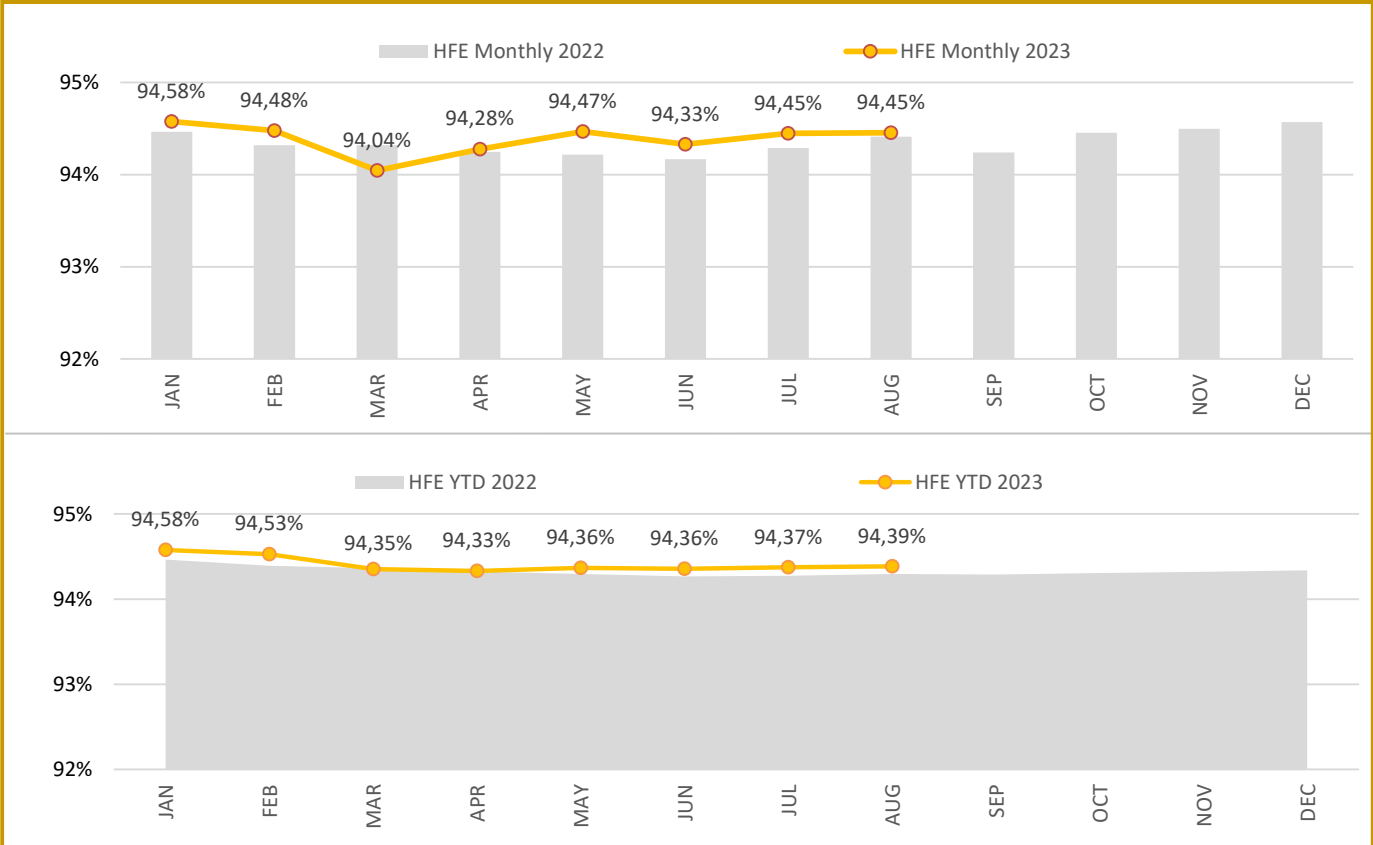
PI #1: HFE based on Actual at FABEC level (incl. all days)



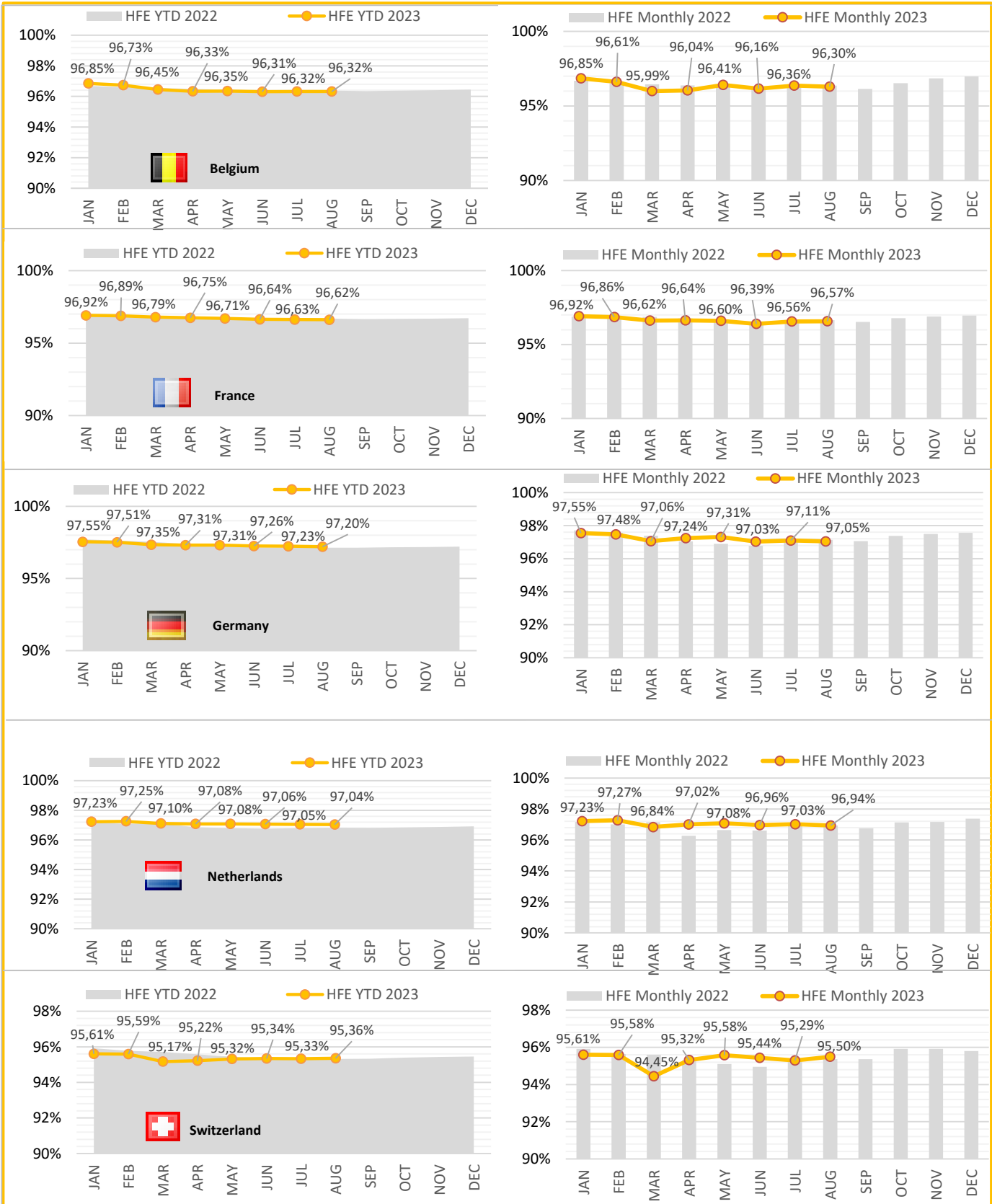
PI #2: KEP/HFE based on filed FPL at FABEC level (excl. 10 best/worst days)



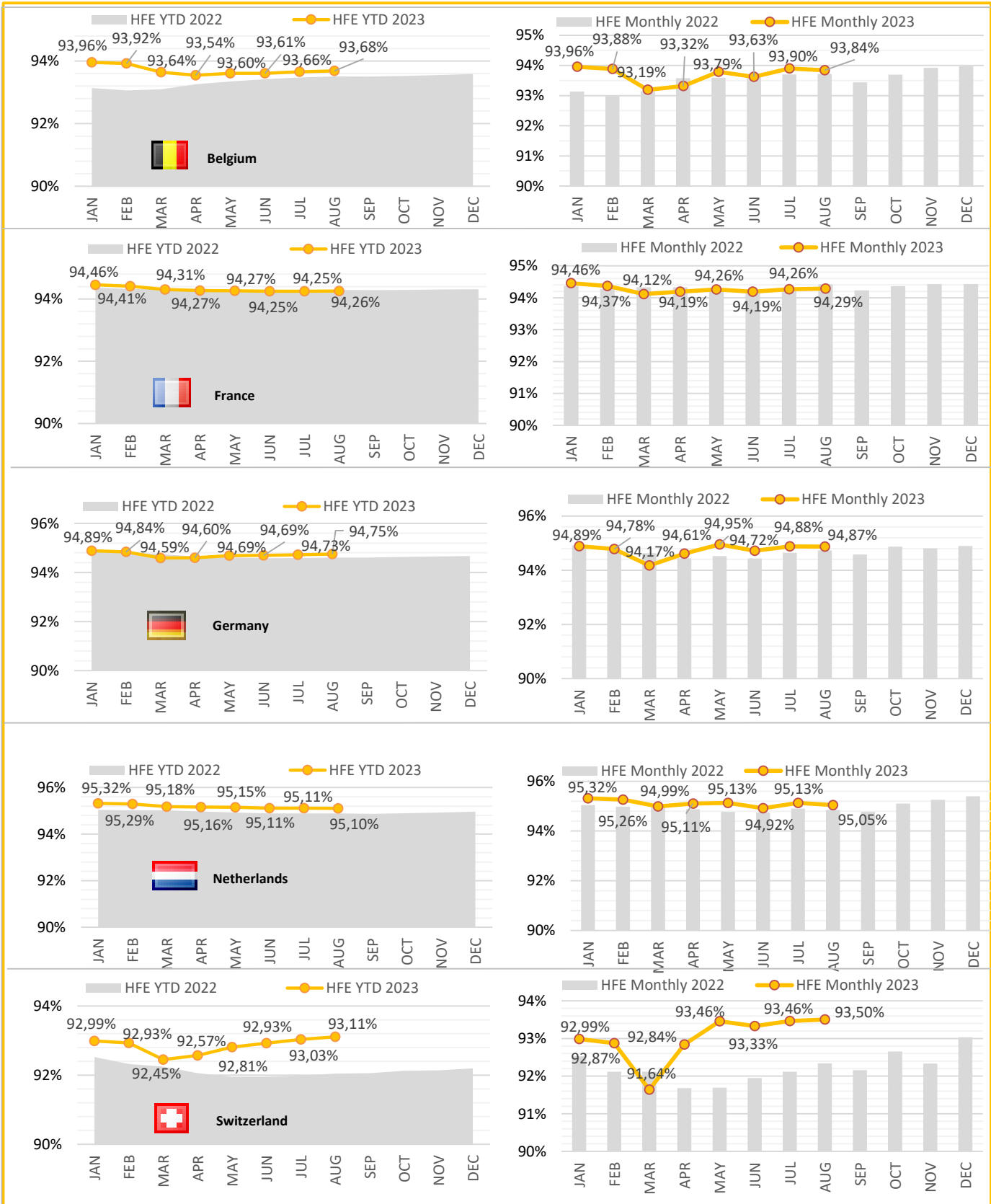
PI #3: HFE based on filed FPL at FABEC level (incl. all days)



PI #4: HFE based on Actual at State level (incl. all days)



PI #5: HFE based on filed FPL at State level (incl. all days)

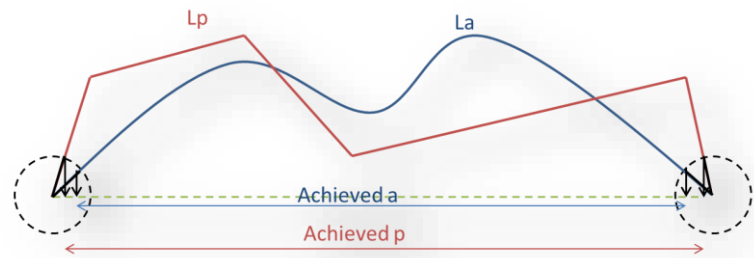


Glossary

KEP / KEA definition

KEP compares the length of the en route section of the last filed flight plan L_p with the corresponding Achieved p of the great circle distance.

KEA compares the length of the en route section of the actual trajectory L_a with the corresponding Achieved a of the great circle distance.



$$KEA = (L_a - \text{Achieved } a) / \text{Achieved } a$$

$$KEP = (L_p - \text{Achieved } p) / \text{Achieved } p$$

KEP is the reference for SES-wide improvement with a global target set by the European Commission. KEA is the reference for FAB improvements with individual targets set by the European Commission.

Achieved distance calculation

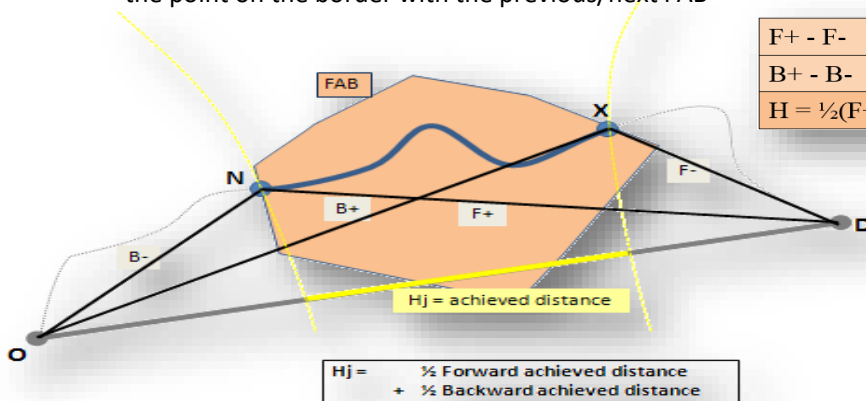
4 reference points are identified for KEP/KEA calculation :

The **O**rigin and **D**estination points are the targets of the trajectory and the reference points for the Great Circle:

- the airports inside the SES area
- when the airports are outside the SES area, they are the trajectory point at the SES border

The **eN**try and **eX**it points are the first and last points of the part of the trajectory considered within a FAB:

- the point on the 40NM circle around departure or arrival airport
- the point on the border with the previous/next FAB



F+ - F-	Forward achieved distance
B+ - B-	Backward achieved distance
$H = \frac{1}{2}(F+ - F-) + \frac{1}{2}(B+ - B-)$	Achieved distance

$$H_j = \frac{1}{2} \text{ Forward achieved distance} + \frac{1}{2} \text{ Backward achieved distance}$$

TABLE OF ABBREVIATIONS

ADEP - Airport of Departure

ANSP - Air Navigation Service Provider

ATFM - Air Traffic Flow Management

FABEC - Functional Airspace Block Europe Central

TMA - Terminal Manoeuvring Area, delimited by a 40 NM circle around the origin and destination airport.

ADES - Airport of Destination

PRU - Performance Review Unit

YTD - Year to Date value

FPP - FABEC Performance Plan

FABEC Performance Report Environment:

Editor: FABEC PMG
Sources: EUROCONTROL PRU (<http://ansperformance.eu/>), FABEC ANSPs
Status: August 2023
www.FABEC.eu

Notice

The FABEC PMG has made every effort to ensure that the information and analysis contained in this document are as accurate and complete as possible.

Only information from quoted sources has been used and information relating to named parties has been checked with the parties concerned.

Despite these precautions, should you find any errors or inconsistencies we would be grateful if you could please bring them to the FABEC PMG's attention.